



FCL10, FCL10M and FCL10-10 Cabinet Lock Installation Instructions

Input:

FCL10 and FCL10M: 12/24VDC field changeable
 FCL10-10: 12VDC ONLY

Current:

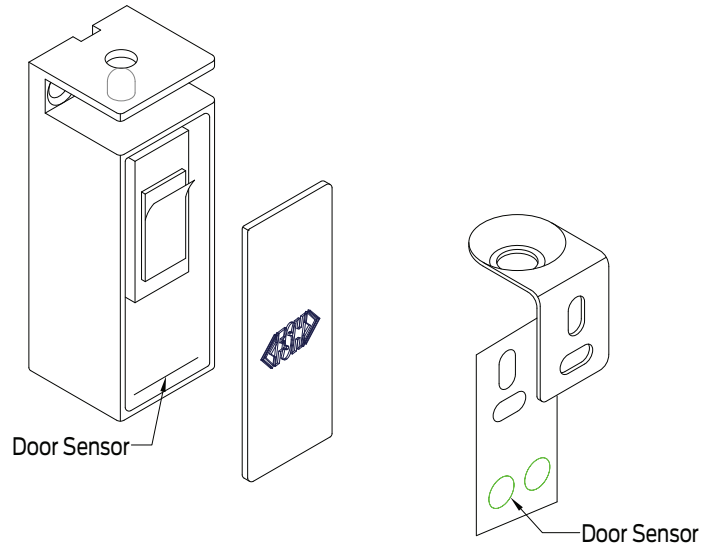
12VDC/300mA
 24VDC/150mA

Monitoring: (M version only)

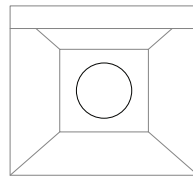
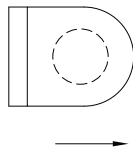
LSS: Lock Status Sensor micro switch rating 1A/30VDC
 DSS: Door Status Sensor reed switch max 10W (max switching contact 0.5A)

Lock Function Mode:

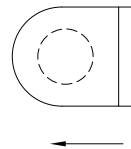
Power To Open (PTO) - Factory default setting
 Power To Lock (PTL)



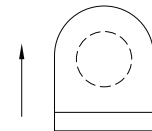
Lock from side



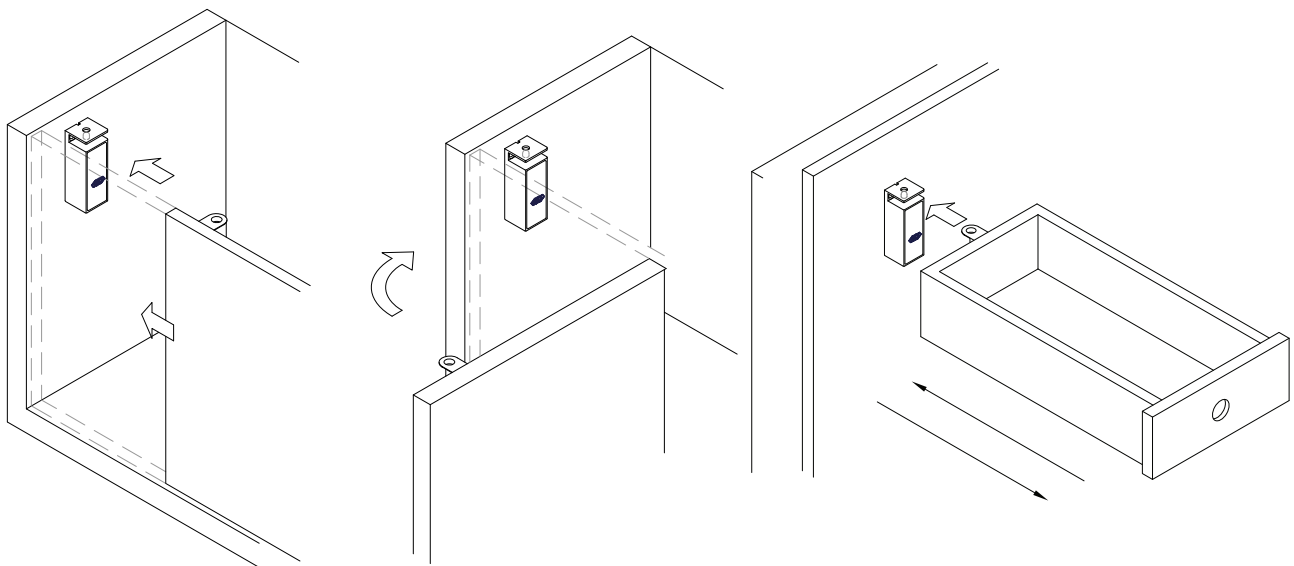
Lock from side



Lock from front



3-dimensional locking application



Lock from front in sliding door

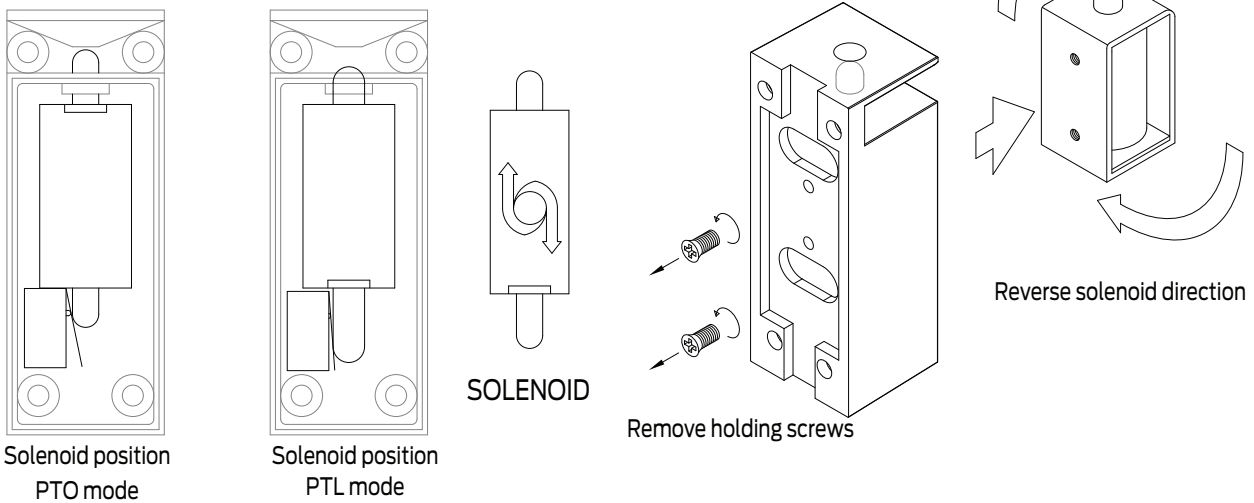
Lock from side in a swing door

Lock from front in sliding draw



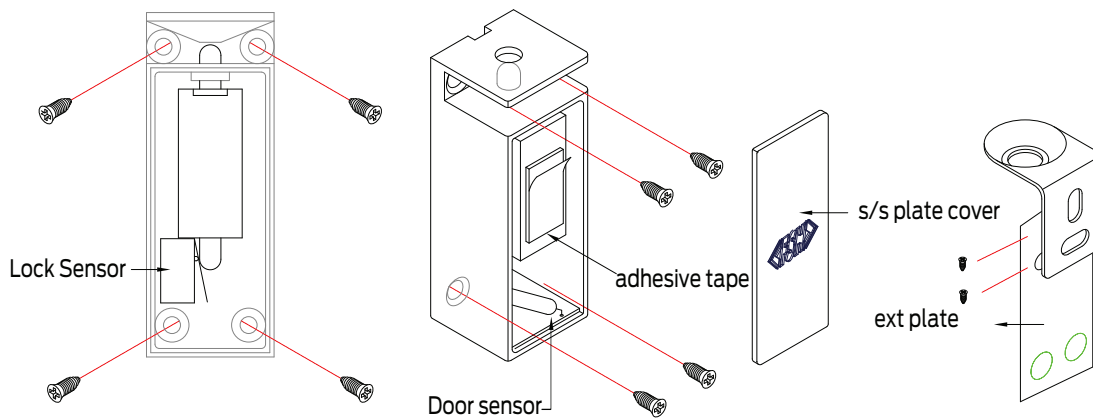
FCL10, FCL10M and FCL10-10 Cabinet Lock Installation Instructions

Changing the lock function: Power To Open <-> Power To Lock

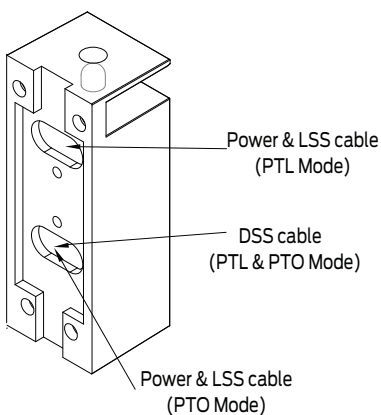


Mounting the lock:

1. Set the lock to the required function mode (Power To Open / Power To Lock)
2. Route the wiring through the correct hole as per the wire connection diagram, making sure that the wiring does not obstruct solenoid movement
3. Secure the solenoid with the holding screws and mount the cabinet lock as required
4. Check the lock functionality with power connected
5. Remove the adhesive protective strip on the double sided tape attached to the solenoid and stick on the stainless steel plate cover



Wire connection (connect provided varistor according to diagram)



12VDC		24VDC	
Red	+	Red	+
Black	Varistor	Black	Varistor
Blue	Power	Blue	Power
White	-	White	-
DOOR STATUS SENSOR		LOCK STATUS SENSOR	
Green	Orange	Blue	NC
		White	COM
		Yellow	NO
OPEN POSITION		LOCK POSITION	

PFS0022



1800 098 094
info.au@allegion.com
fshlocking.com.au

©Allegion 2024